

# **CUSTOM RENTAL EXHIBIT SOLUTIONS**

PREMIUM EXHIBIT RENTAL PACKAGES  
AND CASE STUDIES

NATIONWIDE

**360**



## PRIMARY

10x10

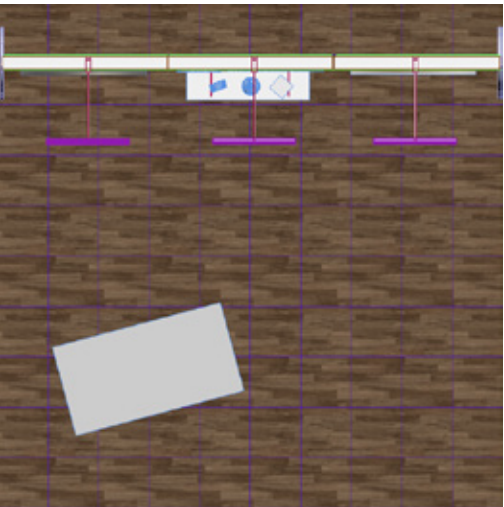
### 10x10 backwall with shelves

Included:

- 8'H back wall structure with two cargo feet. Panels in choice of black, white, maple or grey wood inserts.
- Three clamping LED stem lights
- Three glass product shelves each 8" x 36" (shelving hardware in anodized aluminum)
- One reception counter 1m wide with locking storage
- Two direct-to-surface print graphics each 36" x 48"
- One vinyl logo on center backwall (up to 3 sq. feet)
- One vinyl logo for front of counter (up to 3 sq. feet)

Cost \$4,750

\* Does not include flooring, furniture or monitors. Logistics (shipping & labor) and show services not included and will be provided separately based on show location.



### PANEL COLOR CHOICES





## PRIMARY PLUS

10x10

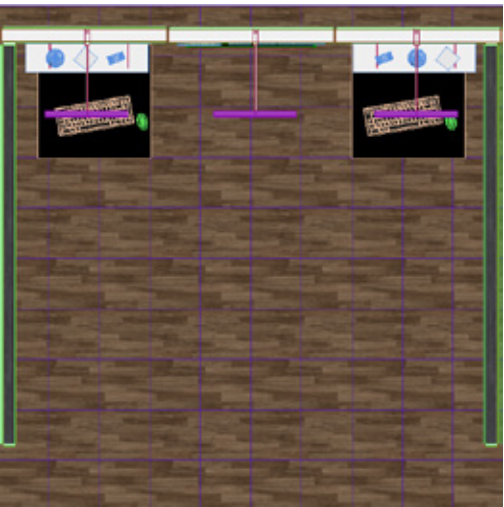
### 10x10 backwall with display cabinets and shelves

Included:

- 8'H back wall structure with two cargo feet. Panels in choice of black, white, maple or grey wood inserts.
- Three clamping LED stem lights
- Two sidewall panels
- Six glass product shelves each 8" x 36" (shelving hardware in anodized aluminum)
- Two 1/2m counters with locking storage
- One 36" x 48" direct-to-surface print graphic
- One vinyl logo on backwall. (up to 3 sq. feet)

Cost \$5,320

\* Does not include flooring, furniture or monitors. Logistics (shipping & labor) and show services not included and will be provided separately based on show location.



### PANEL COLOR CHOICES







## PRIMARY COMPLETE

10x20

**10x20 backwall with graphics and overhead lighting and casual meeting space**

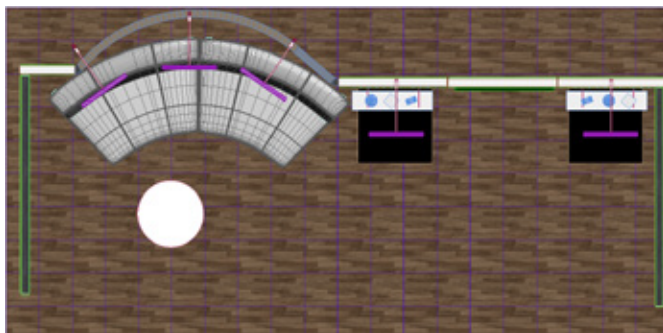
Included:

- 8' high backwall and two sidewalls in choice of black, white, maple or grey wood inserts
- Five clamping LED stem lights
- Six glass product shelves each 8" x 36" (shelving hardware in anodized aluminum)
- Two 1/2m counters with locking storage
- Three direct-to-surface print graphic mural on curved wall each 39" x 95"
- Two vinyl taglines above shelves
- One mount for client provided screen up to 55"

Cost \$8,850

Upgrade 39" x 95" graphics to SEG graphics for \$480.00

\* Does not include flooring, furniture, or monitors. Logistics (shipping & labor) and show services not included and will be provided separately based on show location.



### PANEL COLOR CHOICES



WHITE



BLACK



MAPLE



GREY WOOD





## ESSENTIAL

10x10

### 10x10 backwall with graphics and overhead LED lighting

Included:

- 8'H back wall structure in choice of black, white, maple or grey wood inserts
- Three 1m wide soffits with LED lighting
- One reception counter 1m wide with locking storage
- Two direct-to-surface print graphics each 39" x 95"
- One direct-to-surface print graphic each 36" x 72"
- One vinyl logo on backwall (up to 3 sq. feet)
- One vinyl logo for front of counter (up to 3 sq. feet)

Cost \$4,930  
Upgrade 39" x 95" graphics to SEG graphics for \$320.00

\* Does not include flooring, furniture or monitors. Logistics (shipping & labor) and show services not included and will be provided separately based on show location.



#### PANEL COLOR CHOICES



WHITE



BLACK



MAPLE



GREY WOOD



## ESSENTIAL ENHANCED 10x10

**10x10 backwall with closet, graphics and overhead lighting**

Included:

- 8'H back wall structure with locking closet in choice of black, white, maple or grey wood inserts
- Three 1m wide soffits with LED lighting
- One reception counter 1m wide with locking storage
- Two direct-to-surface print graphics each 39" x 95"
- One direct-to-surface print graphics each 36" x 72"
- One vinyl logo on backwall (up to 3 sq. feet)
- One vinyl logo for front of counter (up to 3 sq. feet)

Cost \$6010  
Upgrade 39" x 95" graphics to SEG graphics for \$320.00

\* Does not include flooring, furniture or monitors. Logistics (shipping & labor) and show services not included and will be provided separately based on show location.



### PANEL COLOR CHOICES



WHITE



BLACK



MAPLE



GREY WOOD





## ESSENTIAL ENCOMPASS 10x20

**10x20 backwall with closet, graphics and overhead lighting**

Included:

- 8' high backwall, locking closet and two sidewalls in choice of black, white, maple or grey wood inserts
- Six 1m wide soffits with LED lighting
- One reception counter 1m wide with locking storage
- Three direct-to-surface print graphics each 39" x 95"
- One vinyl logo for front of counter (up to 3 sq. feet)
- One mount for client provided screen up to 55"
- One vinyl logo on backwall. (up to 6 sq. feet)

Cost \$9,820  
Upgrade 39" x 95" graphics to SEG graphics for \$480.00

\* Does not include flooring, furniture or monitors. Logistics (shipping & labor) and show services not included and will be provided separately based on show location.



### PANEL COLOR CHOICES





## CONTEMPORARY

10x10

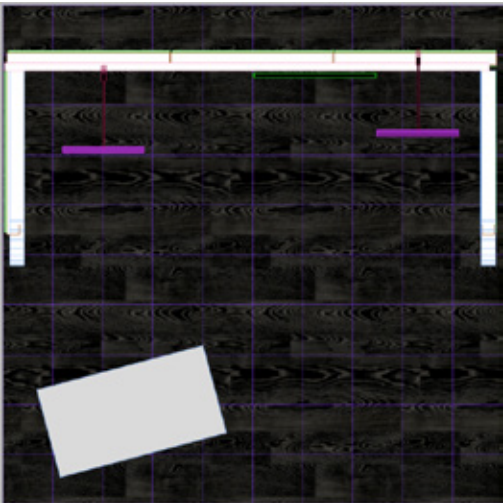
**10x10 modern backwall, graphic band and overhead lighting**

Included:

- 8'H back wall structure in choice of black, white, maple or grey wood inserts
- Two clamping LED stem lights
- One reception counter 1m wide with locking storage
- Direct-to-surface print graphic panel band as shown (Up to 52 sq. feet)
- One vinyl logo on backwall (up to 3 sq. feet)
- One vinyl logo for front of counter (up to 3 sq. feet)
- One mount for client provided screen up to 43"

Cost \$5,345

\* Does not include flooring, furniture or monitors. Logistics (shipping & labor) and show services not included and will be provided separately based on show location.



### PANEL COLOR CHOICES







# CONTEMPORARY COMPLETE

10x20

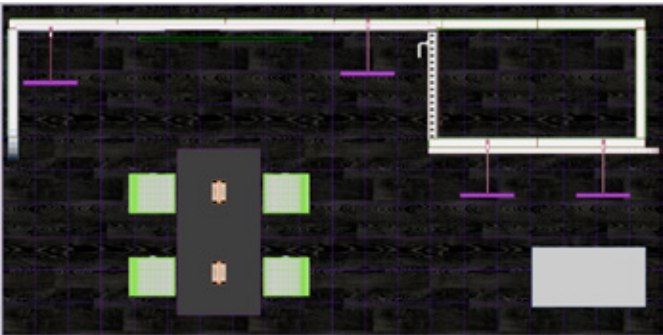
**10x20 modern backwall with closet,  
graphic band and overhead lighting**

Included:

- 8' high backwall, locking closet and two sidewalls in choice of black, white, maple or grey wood inserts. Radius white accent trim as shown
- Four clamping LED stem lights
- One reception counter 1m wide with locking storage
- One meeting counter 5' wide
- Direct-to-surface print graphic panel band as shown (Up to 40 sq. feet)
- Two direct-to-surface print graphics each 39" x 95"
- One vinyl logo for front of counter (up to 3 sq. feet)
- One mount for client provided screen up to 55"

Cost \$9,755  
Upgrade 39" x 95" graphics to  
SEG graphics for \$320.00

\* Does not include flooring, furniture, or monitors.  
Logistics (shipping & labor) and show services not included and will be provided separately based on show location.



## PANEL COLOR CHOICES





## BEACON

20x20

**20x20 Island with branded tower, canopy with double sided workstation and seating area**

Included:

- 16' high tower structure with closet and canopy in choice of black, white, maple or grey wood inserts
- Eight clamping LED stem lights
- One canopy with LED lighting for work station
- Two reception counters each 1m wide with locking storage
- Two counters with locking storage for workstation
- Eight direct-to-surface print graphic mural each 39" x 95"
- Seven direct-to-surface print graphics each 36" x 36"
- Three vinyl logos for front of counters (up to 3 sq. feet)
- Two vinyl logos for backwall (up to 6 sq. feet)
- Two monitor mounts for client-provided screens up to 55"

Cost \$18,845

Upgrade 39" x 95" graphics to SEG graphics for \$1280.00

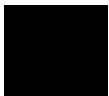
\* Does not include flooring, furniture or monitors. Logistics (shipping & labor) and show services not included and will be provided separately based on show location.



### PANEL COLOR CHOICES



WHITE



BLACK



MAPLE



GREY WOOD





## PERFORMANCE

20x20

**20x20 island exhibit with massive branding areas and open floor plan**

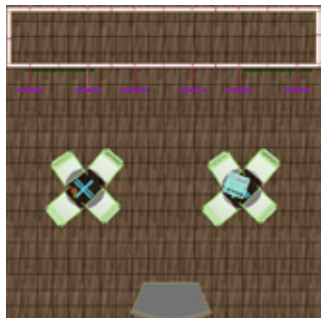
Included:

- 16' high tower structure with locking closet in choice of black, white, maple or grey wood inserts
- Fourteen clamping LED stem lights
- One 1m reception counter with locking storage
- Twenty-four direct-to-surface print graphics each 39" x 95"
- One vinyl logo for front of counter (up to 3 sq. feet)
- Two vinyl logos for side walls (up to 3 sq. feet)
- Two mounts for client provided screens up to 43"

Cost \$26,280

Upgrade 39" x 95" graphics to SEG graphics for \$3840.00

\* Does not include flooring, furniture, monitors, or iPads. Logistics (shipping & labor) and show services not included and will be provided separately based on show location.



### PANEL COLOR CHOICES



WHITE



BLACK



MAPLE



GREY WOOD



## ENGAGEMENT

20x20

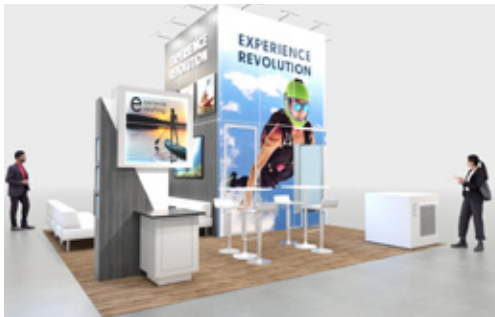
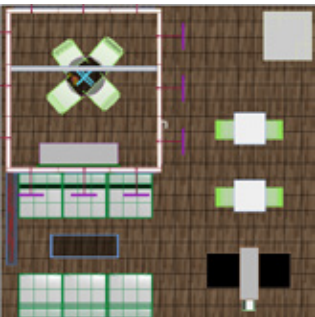
**20x20 Island with branded tower meeting room, workstations and casual meeting areas**

Included:

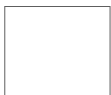
- 16' high tower structure with meeting room in choice of black, white, maple or grey wood inserts
- Meeting room to have clear plexiglass panels as shown
- Twelve clamping LED stem lights
- Two locking cabinets at workstations with LED halo lit graphic or monitor capability
- One reception counter 1m wide with locking storage
- Twelve direct-to-surface print graphic mural on wall. Twelve graphics total, each 39" x 95"
- Six direct-to-surface print graphics, each 36" x 36"
- Two direct-to-surface print graphics, each 24" x 24"
- One vinyl logo for front of counter (up to 3 sq. feet)
- Two vinyl logos on tower (up to 16 sq. feet)
- Two monitor mounts for client-provided screens up to 55"

Cost \$26,280  
Upgrade 39" x 95" graphics to SEG graphics for \$2560.00

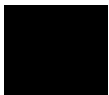
\* Does not include flooring, furniture or monitors. Logistics (shipping & labor) and show services not included and will be provided separately based on show location.



### PANEL COLOR CHOICES



WHITE



BLACK



MAPLE



GREY WOOD





# LOREM IPSEUM 20x30

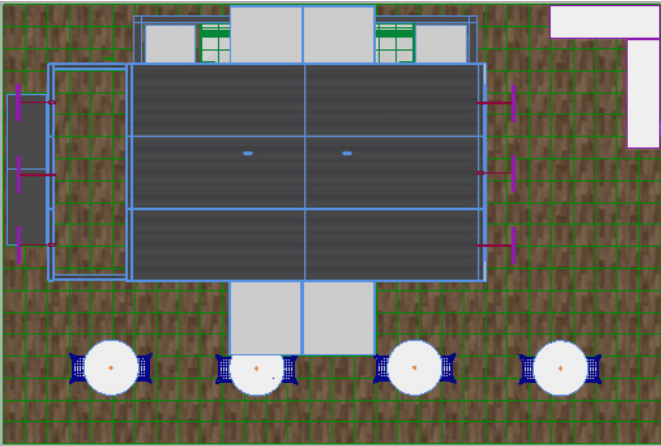
**Lorem ipsum dolor sit amet, consectetur adipiscing elit. Praesent nisi ligula, pharetra vitae**

Included:

- Lorem Ipsum
- Lorem Ipsum
- Lorem Ipsum

Cost \$

\* Does not include flooring, furniture or monitors.  
Logistics (shipping & labor) and show services not included and will be provided separately based on show location.



### PANEL COLOR CHOICES





# LOREM IPSEUM

20x30

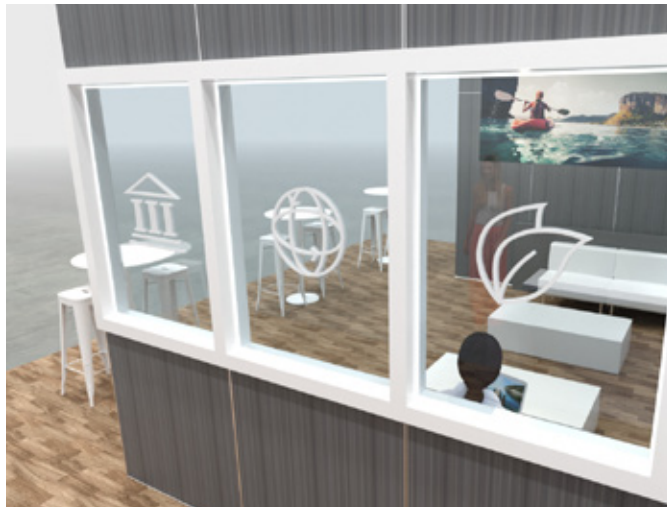
**Lorem ipsum dolor sit amet, consectetur adipiscing elit. Praesent nisi ligula, pharetra vitae**

Included:

- Lorem Ipsum
- Lorem Ipsum
- Lorem Ipsum

Cost \$

\* Does not include flooring, furniture or monitors. Logistics (shipping & labor) and show services not included and will be provided separately based on show location.





**LOREM IPSEUM** **10x10**

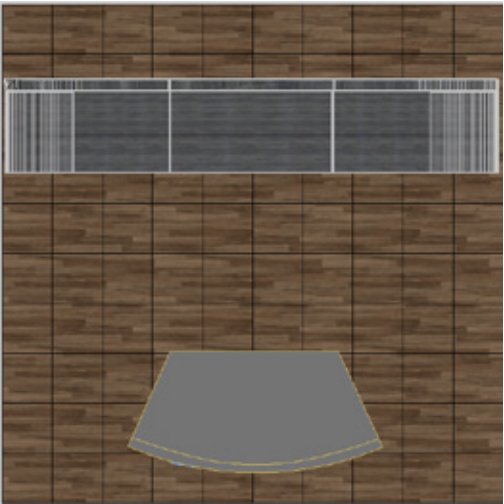
**Lorem ipsum dolor sit amet, consectetur adipiscing elit. Praesent nisi ligula, pharetra vitae**

Included:

- Lorem Ipsum
- Lorem Ipsum
- Lorem Ipsum

Cost \$

\* Does not include flooring, furniture or monitors.  
Logistics (shipping & labor) and show services not included and will be provided separately based on show location.



**PANEL COLOR CHOICES**



WHITE



BLACK



MAPLE



GREY WOOD





**LOREM IPSEUM** 10x20

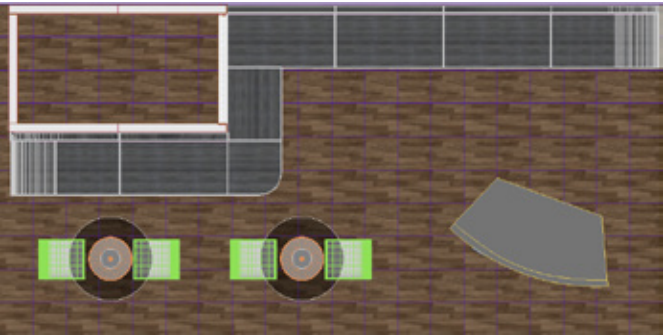
**Lorem ipsum dolor sit amet, consectetur adipiscing elit. Praesent nisi ligula, pharetra vitae**

Included:

- Lorem Ipsum
- Lorem Ipsum
- Lorem Ipsum

Cost \$

\* Does not include flooring, furniture or monitors.  
Logistics (shipping & labor) and show services not included and will be provided separately based on show location.



**PANEL COLOR CHOICES**

			
WHITE	BLACK	MAPLE	GREY WOOD



# **EXAMPLES AND CASE STUDIES**

REAL WORLD APPLICATIONS



# DARRELL LEA

10X30 | SWEETS AND SNACKS EXPO

















# SEITENBACHER

20X20 | SUMMER FANCY FOOD SHOW































## KRATOS

10X20 | INTERNATIONAL MICROWAVE SYMPOSIUM





# EUROPEAN IMPORTS

20X60 | WINTER FANCY FOOD SHOW





# FRATELLI BERETTA 20x20 | NYCWFF







631.467.2034

110 Windsor Place, Central Islip, NY 11722

[www.nationwide-360.com](http://www.nationwide-360.com)

**STEVEN GRIFFITH**

President

[sgriffith@nationwide-360.com](mailto:sgriffith@nationwide-360.com)

(o) 631.467.2034